



Auron SMS Server

An easy to use Windows application to send, receive and process SMS and E-mail messages.

SMS Server Overview

The Auron SMS Server is a Windows application that is used to automatically send, receive and process SMS and E-mail messages.

Some common usage scenarios are:

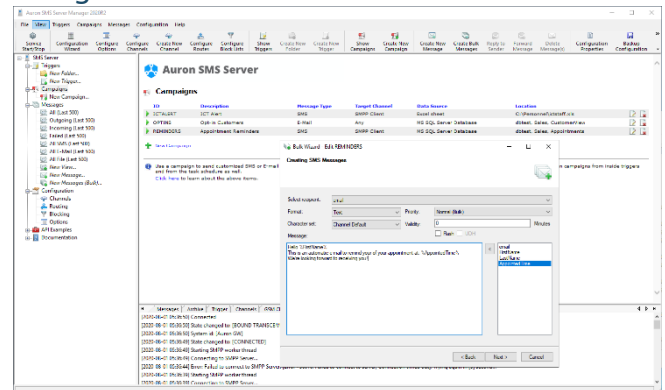
- Sending SMS or E-mail campaigns
- Automatic reply or forwarding
- SMS to e-mail or e-mail to SMS
- 2FA (Two Factor Authentication)
- Alerting using SMS or E-mail
- Remote control of local resources
- A customized SMS Center (SMSC)

Key Features

Some key features of the SMS Server are:

- Send and receive SMS messages using GSM, Android smartphone, SMPP, SMPP Server and HTTP
- Send and receive E-mail messages using SMTP, POP3 and IMAP
- Easy integration using the file-pickup channel
- Automatically process messages using JavaScript, VBScript or SQL Script
- Send out bulk messages from any data-source including CSV, Excel, Access and SQL Server database.
- Sending and processing of messages happens immediately without delay
- Automatic routing or blocking of outgoing messages
- Configurable messaging limits for each channel to prevent unexpected costs
- Created customized message views
- Import and export the SMS Server configuration
- Completely open API

Send out customized bulk SMS campaign using the bulk wizard:



GSM channel type

GSM channels are often used for low volume and low cost sending and receiving of SMS messages. The SMS Server GSM Channel has the following key features:

- Work with any GSM Device that supports GSM 07.07 standard AT command set
- Connect through RS232, TCP (Telnet) and TCP (Raw)
- Compatibility settings that work with older devices or devices that don't support the full GSM 07.07 command set
- Extended diagnostic tools to check GSM reception and send custom AT or USSD commands

SMPP channel types

SMPP client as well as server channels are available. SMPP is a way to send and receive SMS through a TCP connection.

SMPP client channels are commonly used for high volumes or fast sending and receiving is required.



The SMPP server channels can be used to store-and-forward SMS messages as well as implement SMSC use cases. Some SMPP key feature:

- High throughput low latency
- Support TLS or SSL secured connections
- Full support for custom TLV's
- Customize any bind or SMS parameter
- Supports both 7bit and 8bit GSM character encoding as well as Unicode and ASCII
- Fully customizable Bind / Authentication rules

HTTP channel type

Many SMS providers support HTTP for low to medium volume outgoing SMS traffic. Some key features of the HTTP channel type:

- Support fully customized URL for GET interfaces
- Fully customizable JSON or XML POST bodies.
- Web authentication
- Proxy Authentication

E-mail channel types

E-mail is often used to trigger sending SMS messages or on its own to query a system or as a medium for alerts. Some of the key E-mail features in the SMS Server include:

- SMTP, IMAP and POP3 support
- SSL / TLS support
- STARTTLS support for SMTP and IMAP
- Both plain text and HTML bodies are customizable.

SMS Messages

SMS messages can be formatted in any way possible. This includes:

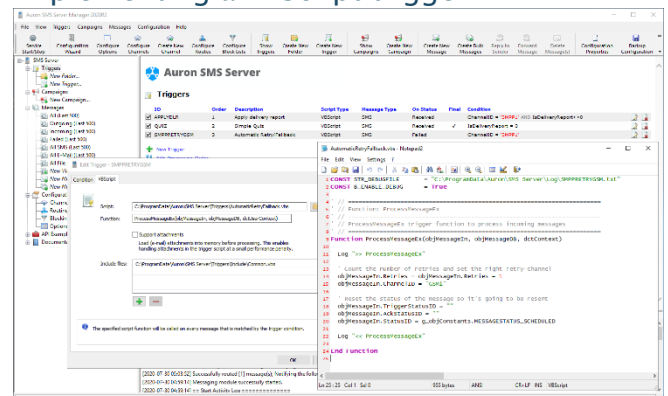
- Plain 160 char GSM encoded
- Unicode
- Binary and custom UDH's
- Flash or push SMS messages

Message processing

Messages can be automatically processed using trigger scripts. A trigger script is a script written in either JavaScript, VBScript or SQL Script.

Triggers are run automatically when a message changes state. Triggers can run when a message is received, sent, delivered, blocked, failed to send, etc..

Implementing a VBScript trigger:



Open API

The SMS Server includes a well-documented and open API to integrate into any backend.

The API is available to trigger scripts but can also be used by 3rd party applications.

Working examples are included for the following programming languages:

- C# .Net / VB .Net
- ASP C#, ASP Classic
- VBScript, VBA
- Visual C++
- PowerShell
- PHP

Alternatively, the SMS Server can be triggered by inserting directly into the server database as well as by file queues.

Any questions?

E-mail to: contact@auronsoftware.com